

Lamorinda OUR HOMES

Lamorinda Weekly Volume 07 Issue 15 Wednesday, September 25, 2013

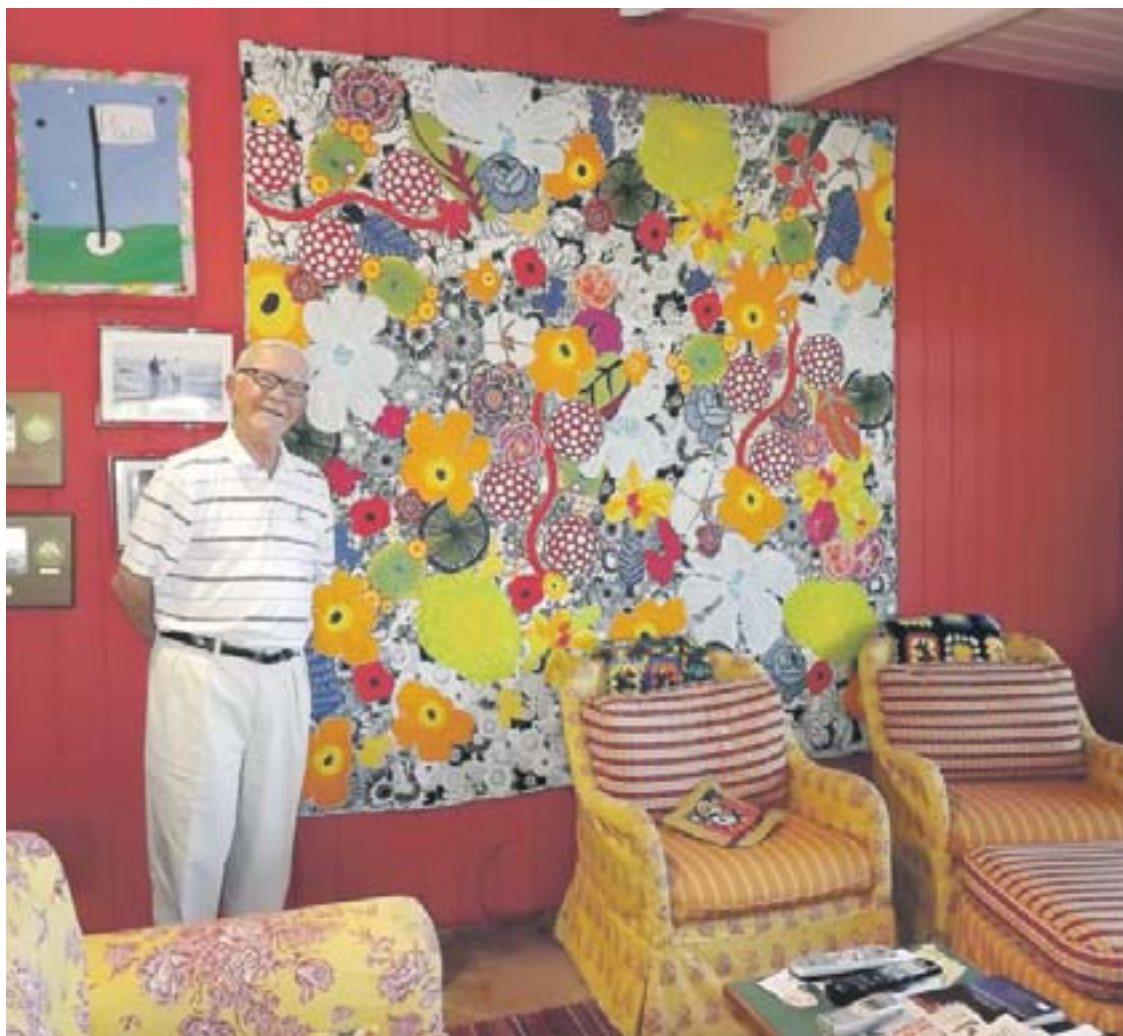
Over the Rainbow

Artist's mid-century home boasts bright walls and colorful art collections

By Cathy Dausman



Digging Deep with Cynthia Brian ...read on page D8



Artist Freddy Moran's husband, Neil, stands in his home office, complete with bright red walls, a peach ceiling, yellow and red overstuffed chairs, one of Moran's original quilts on the wall and a to-die-for view. Photo Cathy Dausman

It was a decision as clear as black and white – before she ever set foot inside, artist Freddy Moran knew she would buy the house. The 900-square-foot Eichler-style home was perched

on a hilltop in Orinda, with backyard views encompassing Sleepy Hollow and Orinda Downs.

“On a clear day you can see Mt. Tamalpais,” she said. But the house was entirely brown, down

to its tile flooring. That was 17 years ago, and that was the last time the adjective “drab” would apply. Today it is a carousel of floor-to-ceiling color that would make a peacock blush.

Moran and her husband, Neil, bought the home after raising five boys in nearby Lafayette. “I felt this would be a happy place to live,” she said. It’s hard not to feel happy – and more than a bit slack-jawed – entering the artist’s home.

The couple reconfigured rooms and added windows, carving out a total of 3,100 square feet of living space while largely staying true to the original footprint. They enclosed the home’s courtyard entryway with glass skylights, raised the sunken floor and painted the walls deep purple. A 50-year-old fiddle fern fig planted inside now reaches for the second story ceiling. Riser-less stairs with checkerboard trim and dotted with stars point the way to the master bedroom, which Moran said “feels like a tree house.”

It was the first room to be repainted, and it was done over in purple.

The couple made a conscious decision to forego curtains and drapes, both of which are superfluous for a private hilltop lot. Moran said the original brown hallway “felt like a movie theater” and “was so dark, you almost needed a flashlight to navigate.” Its lavender walls now showcase another quilt plus a loving collection of family pictures. The guest room is painted a vibrant shade of turquoise which even splashes color across its open-beamed ceiling. It’s a perfect place for the art quilter to showcase her handiwork.

... continued on page D4