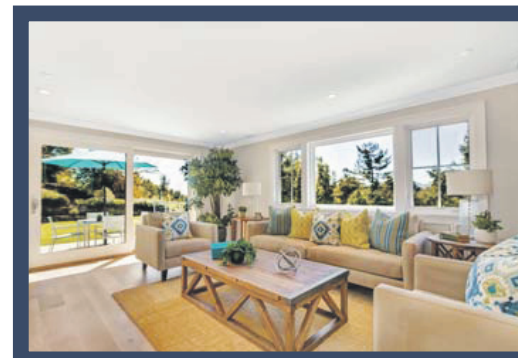
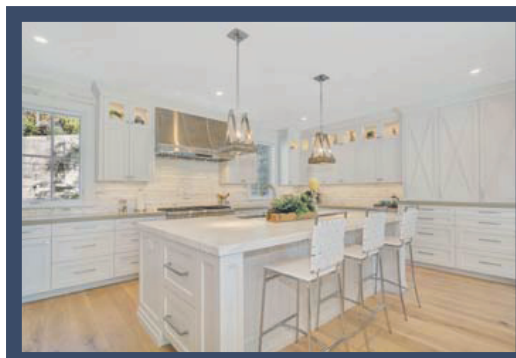


CONTEMPORARY NAPA FARMHOUSE

36 Las Vegas Road, Orinda



Remarkable new construction in the prestigious Country Club neighborhood showcases the superb craftsmanship of Jim Gray of McKenzie Gray Builders and the graceful designs of renowned Architect, Alan Page of Talon Design Group. Spanning approximately 4,000 square feet, this two level home with 5 bedrooms and 4 bathrooms, powder room, spectacular kitchen, two family rooms, study with fireplace and spacious master retreat leaves nothing to be desired. The outdoor entertaining venues on two levels include Connecticut Bluestone walkways and patios, a spacious veranda with built-in barbecue, sprawling lawns and terraced gardens surrounded by mature trees and privacy on a .48-acre lot. Enjoy top-rated Orinda schools, easy access to shops, restaurants, trails, freeway and BART.

Offered at \$3,149,000



Finola
FELLNER 925.890.7807
WWW.FINOLAFELLNER.COM BRE #01428834

THE *Beaubelle*
GROUP

**COLDWELL
BANKER**
RESIDENTIAL BROKERAGE

©2014 Coldwell Banker Real Estate LLC. All Rights Reserved. Coldwell Banker® is a registered trademark licensed to Coldwell Banker Real Estate LLC. An Equal Opportunity Company. Equal Housing Opportunity. Each Coldwell Banker Residential Brokerage Office is Owned by a Subsidiary of NRT LLC. Real estate agents affiliated with Coldwell Banker Residential Brokerage are independent contractor sales associates and are not employees of Coldwell Banker Real Estate LLC. Coldwell Banker Residential Brokerage or NRT LLC. CALBRE License #01908304.

