

TRUST. EXPERIENCE. RESULTS.

GLENN BEAUBELLE & KELLIE BEAUBELLE

925.254.1212

TheBeaubelleGroup.com

CABRE# 00678426, 01165322



ORINDA | MT. DIABLO VIEWS
42 TAPPAN LANE
SLEEPY HOLLOW NEIGHBORHOOD
\$6,895,000 | 5 BD | 6.5 BA
OFFICE | 8,096 SF | 2.26 AC

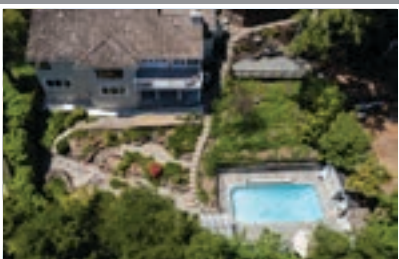
ORINDA | PUTTER'S PARADISE
10 ORINDA VIEW ROAD
ORINDA VIEW DEVELOPMENT
\$5,585,000 | 4 BD | 5.5 BA
OFFICE | 5,691 SF | 1.17 AC



MORAGA | AMPLE ABODE
221 RHEEM BLVD.
CONVENIENT LOCATION
\$2,198,000 | 4 BD | 3.5 BA
3,276 SF | .45 AC



ORINDA | Playful Paradise
3 LOS CONEJOS
EL TOYONAL LOCATION
\$1,995,000 | 5 BD | 3.5 BA
2,888 SF | .48 AC



LAFAYETTE | 2 SEPARATE LOTS
HAPPY VALLEY GLEN
1240 MONTICELLO RD | 15.52 AC
\$2,985,000
0 MONTICELLO RD | 7.64 AC
\$2,398,000



Lamorinda home sales recorded

| City | Last reported | Lowest amount | Highest amount |
|-----------|---------------|---------------|----------------|
| LAFAYETTE | 16 | \$750,000 | \$3,850,000 |
| MORAGA | 6 | \$710,000 | \$2,125,000 |
| ORINDA | 13 | \$1,091,000 | \$2,625,000 |

Home sales are compiled by Cal REsource, an Oakland real estate information company. Sale prices are computed from the county transfer tax information shown on the deeds that record at close of escrow and are published five to eight weeks after such recording. This information is obtained from public county records and is provided to us by California REsource. Neither Cal REsource nor this publication are liable for errors or omissions.

LAFAYETTE

968 4th Street, \$750,000, 1 Bdrms, 642 SqFt, 1939 YrBlt, 03-27-24
3231 Burton Court, \$1,470,000, 4 Bdrms, 1924 SqFt, 1956 YrBlt, 04-02-24
910 Carl Road, \$3,850,000, 4 Bdrms, 3654 SqFt, 1948 YrBlt, 03-26-24,
Previous Sale: \$1,680,000, 09-16-03
1018 Dyer Drive, \$2,350,500, 3 Bdrms, 1997 SqFt, 1951 YrBlt, 04-01-24,
Previous Sale: \$820,000, 05-17-17
1874 Hannibal Drive, \$2,050,000, 4 Bdrms, 2007 SqFt, 1965 YrBlt, 03-27-24,
Previous Sale: \$530,000, 06-22-00
1087 Leland Drive, \$2,550,000, 4 Bdrms, 3779 SqFt, 2016 YrBlt, 03-28-24,
Previous Sale: \$1,930,000, 10-25-17
3334 North Lucille Lane, \$1,884,000, 5 Bdrms, 2541 SqFt, 1951 YrBlt, 03-25-24,
Previous Sale: \$83,000, 08-01-78
3434 Moraga Boulevard, \$1,601,000, 2 Bdrms, 1383 SqFt, 1941 YrBlt, 03-28-24
19 Old Millstone Lane, \$2,675,000, 5 Bdrms, 2301 SqFt, 1963 YrBlt, 04-01-24
36 Olympic Oaks Drive, \$2,200,000, 3 Bdrms, 2329 SqFt, 1997 YrBlt, 04-05-24,
Previous Sale: \$1,169,500, 08-20-13
1128 Orchard Road, \$2,200,000, 3 Bdrms, 2665 SqFt, 1939 YrBlt, 03-27-24
3392 Orchard Valley Lane, \$1,430,000, 3 Bdrms, 1384 SqFt,
1953 YrBlt, 03-26-24, Previous Sale: \$73,500, 11-01-78
76 Revere Court, \$1,755,000, 3 Bdrms, 1918 SqFt, 1971 YrBlt, 04-02-24,
Previous Sale: \$755,000, 11-12-02
3208 Ronino Way, \$2,089,000, 4 Bdrms, 2838 SqFt, 1983 YrBlt, 03-25-24,
Previous Sale: \$1,754,500, 04-02-20
1594 Silver Dell Road, \$2,325,000, 5 Bdrms, 3711 SqFt, 1964 YrBlt, 03-26-24
1071 Sunrise Ridge Drive, \$1,880,000, 5 Bdrms, 3572 SqFt,
1998 YrBlt, 03-28-24, Previous Sale: \$1,045,000, 10-17-14

MORAGA

1988 Ascot Drive #C, \$710,000, 3 Bdrms, 1472 SqFt, 1970 YrBlt, 03-28-24,
Previous Sale: \$480,000, 11-01-06
8 Harold Drive, \$1,650,000, 4 Bdrms, 1653 SqFt, 1956 YrBlt, 04-02-24,
Previous Sale: \$1,470,000, 08-25-21
4004 Paseo Grande, \$2,125,000, 4 Bdrms, 2341 SqFt, 1969 YrBlt, 03-28-24,
Previous Sale: \$185,000, 06-01-79
375 Redfield Place, \$2,200,000, 4 Bdrms, 2340 SqFt, 1966 YrBlt, 04-04-24,
Previous Sale: \$1,228,500, 04-08-08
243 Sandringham Drive, \$1,880,000, 4 Bdrms, 2353 SqFt, 1976 YrBlt, 03-29-24,
Previous Sale: \$925,000, 10-11-12
5 Tracy Court, \$1,775,000, 3 Bdrms, 2717 SqFt, 1986 YrBlt, 04-05-24,
Previous Sale: \$985,000, 01-08-04

... continued on Page OH5



Compass is a real estate broker licensed by the State of CA & abides by Equal Housing Opportunity laws. License Number 01522235. All material presented herein is intended for informational purposes only and is compiled from sources deemed reliable but has not been verified. Changes in price, condition, sale or withdrawal may be made without notice. No statement is made as to accuracy of any description. All measurements & sf are approx.

COMPASS